

# SAFE USE OF COMPRESSED GAS CYLINDERS & CONTAINERS



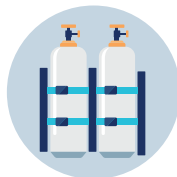
## USE EQUIPMENT DESIGNED FOR MOVING CYLINDERS AND CONTAINERS



- ⚠ DO NOT DRAG, DROP, OR ROLL CYLINDERS OR CONTAINERS NOR LIFT CONTAINERS BY THE VALVE PROTECTION. AN IMPROPERLY HANDLED CYLINDER OR CONTAINER CAN ROLL OR FALL LEADING TO INJURY, EQUIPMENT DAMAGE, OR UNCONTROLLED PRODUCT RELEASE.
- ✓ WHEN MOVING CYLINDERS OR CONTAINERS, MAKE SURE VALVES ARE CLOSED, VALVE PROTECTION IS IN PLACE, AND THE CYLINDER OR CONTAINER IS PROPERLY SECURED AND MOVED IN THE UPRIGHT, VALVE-UP POSITION.



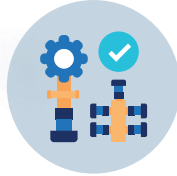
## SECURE CYLINDERS AND CONTAINERS WHEN BEING USED OR STORED



- ⚠ AN UNSECURED CYLINDER OR CONTAINER CAN ROLL OR FALL LEADING TO INJURY, EQUIPMENT DAMAGE, OR UNCONTROLLED PRODUCT RELEASE.
- ✓ SECURE CYLINDERS AND CONTAINERS WITH A CHAIN, STRAP, RACK, OR OTHER SUITABLE DEVICE. DO NOT USE EXTENSION CORDS, CLOTHING BELTS, ETC.
- ✓ USE NONABRASIVE STRAPPING TO SECURE COMPOSITE CYLINDERS.
- ✓ STORE AND USE WITH THE VALVE UP TO ENSURE PROPER OPERATION OF VALVE AND RELIEF DEVICES.
- ✓ USE VALVE PROTECTION FOR CYLINDERS NOT IN USE.



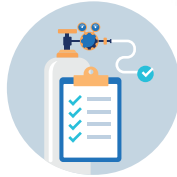
## USE THE CORRECT VALVE OUTLET CONNECTION



- ⚠ USE OF ADAPTORS OR INCORRECT VALVE OUTLET CONNECTIONS CAN RESULT IN A DANGEROUS CONNECTION LEADING TO INJURY, EQUIPMENT DAMAGE, OR UNCONTROLLED PRODUCT RELEASE. NEVER FORCE CONNECTIONS THAT DO NOT FIT.
- ✓ CONTACT YOUR GAS SUPPLIER FOR THE CORRECT VALVE OUTLET CONNECTION.



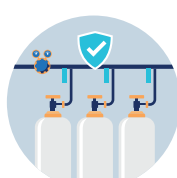
## CONNECT ALL EQUIPMENT BEFORE OPENING VALVE



- ⚠ THE SUDDEN RELEASE OF PRODUCT CAN CAUSE SERIOUS INJURY OR DAMAGE TO EQUIPMENT.
- ✓ CONNECT ALL EQUIPMENT, POINT THE VALVE OUTLET AWAY FROM PERSONNEL, AND OPEN THE VALVE SLOWLY.
- ✓ ONLY TIGHTEN OR REPAIR CONNECTIONS WHEN THE SYSTEM IS NOT UNDER PRESSURE.
- ✓ CHECK FOR LEAKS.



## TRANSFILLING SHALL ONLY BE PERFORMED BY THE SUPPLIER OR TRAINED PERSONNEL



- ⚠ TRANSFILLING CYLINDERS OR CONTAINERS CAN RESULT IN OVERPRESSURIZATION, LEADING TO A CATASTROPHIC FAILURE IN THE SYSTEM.
- ⚠ TRANSFILLING CAN ALSO INTRODUCE CONTAMINANTS INTO THE CYLINDER OR CONTAINER, CREATING A POTENTIAL SAFETY HAZARD.
- ✓ TRAINED PERSONNEL SHALL FOLLOW WRITTEN OPERATING PROCEDURES, USE APPROPRIATE EQUIPMENT, AND COMPLY WITH REGULATIONS WHEN TRANSFILLING.



## IMMEDIATELY NOTIFY YOUR GAS SUPPLIER OF ANY EQUIPMENT ISSUES, DAMAGE, OR LEAKS



- ⚠ DAMAGED OR LEAKING CYLINDERS OR CONTAINERS ARE A SAFETY HAZARD. NEVER ATTEMPT TO REPAIR A CYLINDER, CONTAINER, OR VALVE.
- ⚠ NEVER TRANSPORT OR SHIP A DAMAGED OR LEAKING CYLINDER OR CONTAINER.

